

ROLLING OUT THE WELCOME MAT

A course to enhance customer service standards in local businesses will be offered at the home of the Valley Rattler, the Gympie Railway Station on April 8.

"Visitors spend money in our region every day. Keeping tourists and customers happy will keep them in the area longer to spend more money in local businesses – meaning more jobs and local prosperity," Pauline Rees, Wide Bay Institute of TAFE said.

The Wide Bay Institute of TAFE is hosting The Welcome Project – a series of customer service training sessions run in the Sunshine Coast Hinterland, Gympie, Maryborough,

Hervey Bay and Bundaberg.

Last November, a Welcome Mary Valley course was held at the Kandanga Information Centre and was well received, paving the way for further sessions.

The course focuses on the importance of creating a 'point of difference' service culture, and offers practical tips on generating positive word of mouth recommendations for your business and community.

The two hour session is free to Mary Valley residents and businesses, and Mary Valley Heritage Rail (MVHR) volunteers.

Course attendees will undertake learning with a difference in the Refreshment Room of the Gympie Railway Station, Tozer Street, Gympie. At the conclusion of each session MVHR volunteers will provide a guided tour of the steam train and the historical railway station.

Participants can attend either the 9.30am to 11.30am, 1.00pm to 3.00pm or 5.30pm to 7.30pm session.

For more information, refer to the calendar of events on the back, or call Wide Bay TAFE on 1300 656 188.

DAIRY FARMERS GATHER TO COMBAT MASTITIS

Through consultations with Mary Valley dairy producers, representatives of the Department of Primary Industries and Fisheries (DPIF) established that mastitis in dairy cattle was a significant problem.

To tackle the issue, the department held a field day on January 29 – at Kenman's farm in Kybong – and enlisted Justin Schotte (Gympie

Veterinary Services) and John Miller (DPIF Dairy Extension Officer), to speak on the causes of mastitis in herds, and ways to reduce the risk of cows contracting the disease.

Over 50 dairy producers from the Mary Valley and beyond attended.

Clinical cases of mastitis in dairy cows can prove costly for local farmers, and although it cannot be completely eliminated, education is a key tool in combating the issue. The biggest financial costs to producers are discarded milk

and a reduction in the amount of milk produced – though there is also the risk of the animal's death.

The DPIF intend to conduct other workshops over the next few months, offering farmers the opportunity to access information on issues affecting them, and update their skills.

For information on upcoming events, contact Mal Matthew, Department of Primary Industries and Fisheries on 0427 600 714 or 07 5480 4428.

BOOKLET TRACES MARY VALLEY HISTORY

A new booklet that provides a fascinating chronicle of the Mary Valley's history was launched in February by Queensland State Archives.

Wild Heart, Bountiful Land: An Historical Overview of the Mary River Valley, authored by respected historians Dr Murray Johnson and Professor Kay Saunders, is based on extensive research of archival records held at Queensland State Archives, State Library of Queensland, the former Cooloola Shire Council and historical groups.

Illustrated with historical photographs of the region, the booklet traces bygone times of the Mary Valley, from its early Indigenous inhabitants, through its forestry and agricultural industries, to the Mary Valley Branch Railway and the growth of townships.

The booklet has been distributed to school libraries and is available locally from the Imbil library and the Kandanga One Stop Shop. Copies are also available free of charge from Gympie Regional Library Services by phoning 07 5481 0859.



Historians Professor Kay Saunders and Dr Murray Johnson, and Janet Prowse, State Archives, present former Cooloola Shire Mayor Mick Vernados with the booklet

TRAVESTON CROSSING CONTACT NUMBERS

| | | | | | |
|---|--------------|---|--------------|---|--|
| Kandanga One Stop Shop | 07 5488 4929 | Department of Primary Industries and Fisheries | 13 25 23 | CONTACT THE TASK FORCE | KEY WEBSITES |
| Counselling Services | | QRAA | 1800 623 946 | Phone: 1800 133 258 | Links to additional departmental websites can be found at: |
| 1. Crisis counselling (Lifeline) 24/7 | 13 11 14 | | | Fax: 3224 5310 | • www.communityfutures.qld.gov.au |
| 2. Lifeline at Kandanga | 07 5484 3299 | Department of Main Roads | 1800 180 966 | Email: info@communityfutures.qld.gov.au | • www.qld.gov.au |
| Community Futures Task Force | 1800 133 258 | Department of Natural Resources and Water | 1800 243 585 | Website: www.communityfutures.qld.gov.au | • www.qld.gov.com.au |
| QLD Water Infrastructure Pty Ltd | 1800 225 384 | Office of Urban Management | 1800 021 818 | Post: PO Box 15637 | • www.qraa.qld.gov.au |
| | | | | City East QLD 4002 | • www.oam.qld.gov.au |
| Department of Tourism, Regional Development and Industry | 1300 363 711 | Department of Local Government, Sport and Recreation | 07 3234 1870 | | • www.environment.gov.au |

PROPOSED TRAVESTON CROSSING DAM - CALENDAR OF EVENTS

| Date | Time and Location | Events | Contact |
|---------------------------|--|--|---|
| April | | | |
| Thu 3 | 9:00am - 3:15pm, Gunabul Homestead, Gympie | Accommodation Industry Business Development workshop (B&B's/ farmstay/modular) | Department of Tourism, Regional Development and Industry Centre, Sunshine Coast ph 5453 1800 |
| Tue 8 | 9:30am - 11:30am, Refreshment Room, Gympie Railway Station, Tozer Street, Gympie | Welcome Customer Service training | Wide Bay Institute of TAFE ph 1300 656 188 |
| Tue 8 | 1:00pm - 3:00pm, Refreshment Room, Gympie Railway Station, Tozer Street, Gympie | Welcome Customer Service training | Wide Bay Institute of TAFE ph 1300 656 188 |
| Tue 8 | 5:30pm - 7:30pm, Refreshment Room, Gympie Railway Station, Tozer Street, Gympie | Welcome Customer Service training | Wide Bay Institute of TAFE ph 1300 656 188 |
| Wed 9 | 5:30pm - 8:30pm, Gympie Pines Golf Club, Gympie | Tendering for Success workshop | Department of Tourism, Regional Development and Industry Centre, Sunshine Coast ph 5453 1800 |
| Mon 14 | 1:00pm - 2:00pm, Executive Building, 100 George Street, Brisbane | Community Futures Task Force meeting attended by Mayors from Gympie Regional Council and Sunshine Coast Regional Council, and relevant Directors-General | Community Futures Task Force ph 1800 133 258 |
| Mon 14 | 3:00pm - 5:00pm, DPIF office, Cnr Louisa Street and Cartwright Road, Gympie | Mentoring for Growth workshop | Department of Tourism, Regional Development and Industry Centre, Maryborough ph 4121 1780 |
| Tue 15 | 8:00am - 12:00pm, Gympie TAFE College, Cartwright Road, Gympie | Blue Card course for construction industry safety induction | Wide Bay Institute of TAFE ph 1300 656 188 |
| Tue 15 - Wed 16 | 8:00am - 5:00pm, Maryborough TAFE, Nagel Street, Maryborough | Workplace Health and Safety 2 - \$380 (2 day program) | Wide Bay Institute of TAFE ph 1300 656 188 |
| Wed 16 | 5:30pm - 8:30pm, Petrie Gardens, 246 Petrie Creek Road, Nambour | Tendering for Success workshop | Department of Tourism, Regional Development and Industry Centre, Sunshine Coast ph 5453 1800 |
| Tue 22 | 7:00am - 9:00am, Red Bridge Motor Inn, 380 Nambour Connection Road, Nambour | Project Management workshop | Department of Tourism, Regional Development and Industry Centre, Sunshine Coast ph 5453 1800 |
| Thu 24 | 10:30am - 12:30pm, Department of Communities, Maroochydhore | Regional Services Forum attended by Qld Government agencies | Department of Communities ph 5488 4931 |
| Tue 29 | 7:00am - 9:00am, Chatz Café, Victory College, Old Maryborough Road, Gympie | Project Management workshop | Department of Tourism, Regional Development and Industry Centre, Sunshine Coast ph 5453 1800 |
| May | | | |
| Thu 8 | Time and venue to be confirmed | Prime Contractors' Day | Department of Tourism, Regional Development and Industry Centre, Sunshine Coast ph 5453 1800 |
| Mon 12 | 1:00pm - 2:00pm, Executive Building, 100 George Street, Brisbane | Community Futures Task Force meeting attended by Mayors from Gympie Regional Council and Sunshine Coast Regional Council, and relevant Directors-General | Community Futures Task Force ph 1800 133 258 |
| Thu 15 | 10:30am - 12:30pm, Department of Communities, Maroochydhore | Regional Services Forum attended by Qld Government agencies | Department of Communities ph 5488 4931 |
| Thu 15 - Wed 21 | 8:00am - 5:00pm, Maryborough TAFE, Nagel Street, Maryborough | Workplace Health and Safety 1 - \$820 (5 day program) | Wide Bay Institute of TAFE ph 1300 656 188 |
| Wed 21 | 1:00pm - 5:00pm, Gympie TAFE College, Cartwright Street, Gympie | Blue Card course for construction industry safety induction | Wide Bay Institute of TAFE ph 1300 656 188 |
| June | | | |
| Mon 2 | 1:00pm - 2:00pm, Executive Building, 100 George Street, Brisbane | Community Futures Task Force meeting attended by Mayors from Gympie Regional Council and Sunshine Coast Regional Council, and relevant Directors-General | Community Futures Task Force ph 1800 133 258 |
| Thu 5 | 10:30am - 12:30pm, Department of Communities, Maroochydhore | Regional Services Forum attended by Qld Government agencies | Department of Communities ph 5488 4931 |
| Tue 17 | 8:00am - 12:00pm, Gympie TAFE College, Cartwright Road, Gympie | Blue Card course for construction industry safety induction | Wide Bay Institute of TAFE ph 1300 656 188 |
| Thu 19 | 9:00am - 9:30am Telelink | Regional Services Forum attended by Qld Government agencies | Department of Communities ph 5488 4931 |
| Unconfirmed Dates | | | |
| to be advised | | Draft Land Use and Infrastructure Planning Study for the proposed Traveston Crossing Dam released for public comment | Office Of Urban Management ph 1800 021 818 |
| to be advised | | Environmental Impact Statement - State and Commonwealth assessment | Office of the Coordinator-General ph 1800 996 829 |
| by expression of interest | | Fork Lift Operators Ticket | Wide Bay Institute of TAFE ph 1300 656 188 |
| by expression of interest | | Elevated Work Platform Operators Ticket | Wide Bay Institute of TAFE ph 1300 656 188 |
| by expression of interest | | Scaffolding Operators Ticket | Wide Bay Institute of TAFE ph 1300 656 188 |
| by expression of interest | | Work safely at heights training | Wide Bay Institute of TAFE ph 1300 656 188 |
| anytime | online training | Blue Card course for construction industry safety induction - \$65 | Wide Bay Institute of TAFE ph 1300 656 188 |

Events are subject to change. Please confirm details with the contact agency prior to the event.



TRAVESTON CROSSING DAM

Latest news from the Community Futures Task Force

Issue 14
April 2008

The Community Futures Task Force provides an independent source of information and assistance to the people and communities affected by the proposed Traveston Crossing Dam.

The Task Force – made up of mayors of the communities affected by the proposed dam and heads of Queensland Government departments – meets regularly to identify and address issues of concern, and to develop projects that may benefit Mary Valley

communities in the longer term.

The Task Force is supported by a small Task Force unit that works closely with Mary Valley community leaders and residents, and government representatives.

Following the recent local government amalgamations, the number of mayors representing the communities affected by the proposed dam has reduced from three to two, as the former Cooloola Shire was absorbed into

the Gympie Regional Council, and the former Maroochy and Noosa shires combined with the Caloundra City Council to form the Sunshine Coast Regional Council.

The Task Force looks forward to continuing to work with local government representatives of the communities affected by the proposed Traveston Crossing Dam.

Major General Peter Arnison - Chair

LAND USE AND INFRASTRUCTURE PLANNING STUDY UPDATE

Following the announcement of the proposed Traveston Crossing Dam, a Land Use and Infrastructure Planning Study was undertaken by the Department of Infrastructure and Planning (DIP), through the Office of Urban Management (OUM).

The draft planning study looked at the proposed dam's likely impacts on existing land uses and infrastructure in the Mary Valley, and possible

locations for new or expanded land uses and new or relocated infrastructure.

Between November 2006 and May 2007, 13 community meetings were held in the Mary Valley to identify residents' issues and views and to establish future planning options.

The following frequently asked questions provide an update on the draft planning study.

FREQUENTLY ASKED QUESTIONS

Why was the Land Use and Infrastructure Planning Study carried out?

The proposed dam would have direct and indirect impacts on landholders, businesses, community facilities and transport services in the Mary Valley. The draft study will help address these impacts by providing land use and infrastructure planning information to guide local government planning in the affected area over the next 20 years or more.

The draft planning study does not make any funding commitments or delegate responsibilities for the construction of any proposed new infrastructure in the Planning Study Area. These issues are outside the scope of the draft study, which is intended as a guide for future planning – determining where certain land uses and infrastructure could potentially be located.

When will the draft planning study be publicly released?

The release of the draft planning study is pending state and federal government assessment of the proposed dam. If the dam is approved, the draft planning study will be released for public comment – subject to any revisions required as part of the dam's approval. If the dam is not approved, the DIP will review the draft study and determine the best way forward, in consultation with residents and local councils. This timeframe ensures the study is relevant to key infrastructure that may be in the area in the future.

Why was the planning study undertaken prior to any dam approval?

Input to the planning study was sought from local communities, the former Cooloola, Maroochy and Noosa shire councils, state agencies and Queensland Water Infrastructure Pty Ltd. Additional information was sourced from detailed on-ground investigations and the collation of natural, social, cultural, economic, land use and infrastructure information. This information gathering process was time-consuming and needed to commence well ahead of any decision on the proposed dam.

Cont. page 2

COMMUNITY FUTURES TASK FORCE
www.communityfutures.qld.gov.au
1800 133 258
Publications referred to in this newsletter are available from the Kandanga One Stop Shop or our website.

INSIDE THIS ISSUE:

- Land Use and Infrastructure Planning Study update - Frequently asked questions
- Lifeline in Kandanga
- Coordinator-General requests supplementary report to EIS
- Business growth plan forges ahead at the Hub
- Community speaks on Imbil's recreation needs
- Community Futures Fund
- Make a difference as a volunteer
- Rolling out the welcome mat
- Local dairy farmers combat mastitis
- Booklet traces Mary Valley history
- Calendar of Events



Lifeline is an independent, confidential service located at the Kandanga One Stop Shop, offering free personal and financial counselling.

For Lifeline assistance call 07 5484 3299.

For 24-hour crisis counselling call 13 11 14.

Meet Lifeline's new local representatives over the page.

Cont. page 2

What area does the draft planning study cover?

The Planning Study Area comprises the site of the proposed dam and its environs. Most of the Planning Study Area falls within the former Cooloola Shire – now governed by the Gympie Regional Council; it also includes parts of the former Maroochy and Noosa shires – now governed by the Sunshine Coast Regional Council. Among the townships and localities in the area are Kandanga, Imbil, Brooloo, Carters Ridge and Federal.

What is the land in the Planning Study Area currently used for – and likely to be used for in future?

Most of the Planning Study Area is classified as rural – the main activities being beef production, dairying and horticulture – while the townships and localities have a number of different urban land use classifications. Regardless of whether the proposed dam proceeds, the Planning Study Area will continue to be dominated by rural areas serviced by local townships, most notably Imbil and Kandanga.

How does the draft planning study relate to the recent Environmental Impact Statement (EIS) for the proposed dam?

The EIS covered a wide range of issues, including potential impacts on land uses and infrastructure. Although some of these issues are also covered in the draft planning study, the two documents are separate.

Who is responsible for land use and infrastructure planning in the Planning Study Area?

The former Cooloola Shire Council has been amalgamated into the new Gympie Regional Council, while the former Maroochy and Noosa shire councils are now part of the Sunshine Coast Regional Council. These regional councils are the planning authorities in their respective sections of the Planning Study Area.

The draft planning study predated the amalgamations and considered only the then Cooloola, Maroochy and Noosa shire councils' planning and development regulations in the Planning Study Area. The amalgamations, which took effect on March 15, 2008, may influence the manner in which these regulations are applied to the Planning Study Area.

How will the final Land Use and Infrastructure Planning Study be implemented?

The outcomes of the final planning study will not be legally binding – they will simply help guide the relevant regional councils' long-term land use and infrastructure planning in their sections of the Planning Study Area. In order for these outcomes to take legal effect, the relevant local government planning schemes will need to be amended in consultation with the community.

For more information, contact the Department of Infrastructure and Planning on 1800 021 818 or enquiries@oim.qld.gov.au.

COORDINATOR-GENERAL REQUESTS SUPPLEMENTARY REPORT TO EIS

A media statement released by the Coordinator-General Colin Jensen on March 11 advised that a supplementary report to the Environmental Impact Statement (EIS) is to be compiled by dam proponent Queensland Water Infrastructure Pty Ltd.

Media statement – March 11, 2008

Traveston Dam – supplementary EIS required

Queensland Coordinator-General Colin Jensen has written to Traveston Crossing Dam proponent Queensland Water Infrastructure asking them to prepare a supplementary report to their Environmental Impact Statement (EIS).

Mr Jensen wrote to QWI yesterday, asking them to respond to matters raised during the 12-week public comment period on their EIS.

Mr Jensen said officers had now completed a preliminary review of the more than 16,800 submissions received during the public comment period, and was now moving on to a more detailed assessment of the submissions.

“The process so far has involved detailed cross-checking of every submission received,” Mr Jensen said.

“Submissions were able to be lodged in various ways, such as by post and fax. Where multiple versions of the same submission have been received, they have been counted as one submission. The review process has left 11,261 submissions.

“These have been sent to QWI progressively, and I have now asked QWI formally to respond to the matters raised.”

Mr Jensen said that examples of matters raised in submissions included the assessment of the project's impacts on the Great Sandy Strait and Fraser Island, as well as on various species and communities, and its economic and social impacts.

“Once QWI has provided this supplementary information, I will consider it and the original EIS, as well as the public submissions and other relevant information, such as advice from other government agencies, when evaluating the EIS,” Mr Jensen said.

“This decision will be whether the project can proceed, proceed with modifications or whether it cannot proceed.”

Mr Jensen said a copy of his report was expected to be ready to be sent to the Federal Minister for the Environment, Heritage and the Arts by the middle of the year so the Federal Government could carry out its own assessment.

BUSINESS GROWTH PLAN FORGES AHEAD AT THE HUB – BE A PART OF IT!

In the centre of town, the Imbil Business Hub is home to the Mary Valley Business Expansion and Retention (MV BEAR) program, and temporarily, the Mary Valley Artists' Gallery.

Newly appointed MV BEAR Program Coordinator, Kaili Parker-Price, works part-time in the office, liaising with Project Manager, Margaret Darveniza, to manage the rollout of the business program's activities over the next 10 months.

The MV BEAR program will examine the opportunities for economic growth; build business networks; and equip locals with the tools to construct a vibrant, solid economy and employment landscape.

A committee of 16 local business and community representatives was formed by the Mary Valley Show Society and Imbil Development Group – as the project's community partners.

They met for the first time in February, establishing the geographic boundaries of the project and developing survey questions for local businesses.

The comprehensive and confidential survey of the business community is a pivotal part of the project.

The committee is looking for volunteers to conduct a survey of 50 Mary Valley businesses.

Volunteers receive training and form teams of two to interview assigned businesses using the Mary Valley specific survey questionnaire.

Data collected will illustrate the area's business opportunities and issues, and will be used to produce a report outlining recommendations for improvement.

If you would like more information on the MV BEAR project, to sign up as a volunteer, or to register your business for the survey, call the Program Coordinator, Kaili Parker-Price on 07 5488 6006 or 0447 053 244.

As well as providing a venue for strategic planning meetings and an information point for the MV BEAR project, the Imbil Business Hub also attracts art loving locals and tourists.

Works of art and craft are on sale at the Hub until a permanent venue is secured – a development application is awaiting council consideration.

For further information on the Mary Valley Artists' Gallery contact Marie Hensley at the Kandanga One Stop Shop on 07 5488 4670 or 0427 017 604.



Bottom row L-R Marie Hensley, Department of Communities, Harold Thornton and Celena Ross, Department of Tourism, Regional Development and Industry. Top row L-R Kaili Parker-Price, MV BEAR Project Coordinator, Counsellor Jan Watt, and Roger Hogg, Imbil Development Group



MV BEAR Program Manager, Margaret Darveniza and local Project Coordinator, Kaili Parker-Price

COMMUNITY FUTURES FUND – A HELPING HAND

If your local organisation is holding an event that generates enjoyment for your community you may qualify for financial assistance.

Sporting clubs, schools, hall committees and community groups holding events or activities that strengthen local ties can benefit from the Task Force's Community Futures Fund.

Since it was established in May 2007, the fund has assisted 45 community activities occurring in the areas affected by the proposed dam.

The fund provides a helping hand for non-profit community groups that may have experienced falling patronage and membership contributions, or hardship following the announcement of the proposed dam.

The fund can contribute up to \$5000 for eligible projects. It offers up to two dollars for every dollar contributed by the applicant.

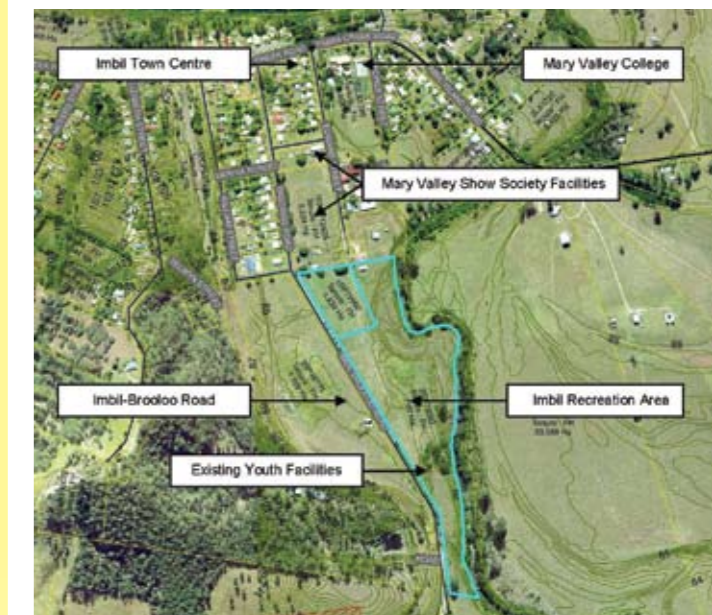
The Community Futures Fund can help reduce the ticket cost of your event – encouraging more people to attend – by subsidising items such as catering and venue hire.

Business enterprises and individuals are not eligible for assistance through the fund.

A funding application form and guidelines are available from the Kandanga One Stop Shop or online at www.communityfutures.qld.gov.au.

For more information or assistance with applications call Marie Hensley at the Kandanga One Stop Shop on 07 5488 4670 or 0427 017 604, or Adam Gauld at the Community Futures Task Force on 1800 133 258 or email info@communityfutures.qld.gov.au.

COMMUNITY SPEAKS ON IMBIL'S RECREATION NEEDS



Aerial view of the Imbil Recreation Area

Local residents and community leaders met with representatives from the Department of Local Government, Sport and Recreation on March 18 to discuss the area's recreation potential.

The community meeting, held at the Imbil RSL Hall, provided an opportunity for locals to put forward their aspirations and ideas for a possible multi-purpose recreational facility at the Imbil Recreation Area (adjacent to the Imbil Showgrounds).

Feedback from the meeting will be incorporated into the concept plan and impact assessment study being developed by the Department of Local Government, Sport and Recreation,

Gympie Regional Council, and their consultants.

In addition to the community forum, consultation activities will include discussions with a wide range of stakeholder groups; and seeking feedback from local schools.

If you were unable to attend the meeting, you can share your thoughts with the study team by writing to the Strategic Leisure Group, PO Box 1358, Capalaba QLD 4157 or emailing imbil@dlgsr.qld.gov.au.

For further information on the project, phone Matthew Horder at the Department of Local Government, Sport and Recreation on 07 5479 1199 or email imbil@dlgsr.qld.gov.au.



Lifeline's Shirley Hussie and Fiona Hawthorne

The local Lifeline team recently welcomed on board Community Support Worker, Fiona Hawthorne and Holistic Counsellor, Shirley Hussie.

Operating from the house at the rear of the Kandanga One Stop Shop, Fiona and Shirley join counsellors Gary Cowan and Katrina Steel in supporting the local community's needs.

MAKE A DIFFERENCE AS A VOLUNTEER

The contribution of volunteers to staffing and managing community organisations, and fostering better relations and services to local people and visitors, is immeasurable.

Becoming a volunteer offers opportunities to help others, gain skills, meet new people and make a difference in your community.

Perhaps you have considered becoming a volunteer and are not sure how to get started.

Locally, projects such as the Mary Valley Business Expansion and Retention (MV BEAR) program rely heavily on the knowledge and skills of volunteers to accomplish its aims of

strengthening the local economy and enhancing employment options.

It is important for community groups to attract, train and support volunteers.

The Community Futures Task Force developed a volunteer's kit containing information and resources for organising volunteers. It was distributed to community groups last October and copies are still available.

The Task Force can assist community groups in the Mary Valley to support their volunteers through training. Your organisation can skill-up its people by applying for subsidised training courses run by Volunteers Sunshine Coast.

A variety of training programs is available for volunteers wishing to hold office positions such as President, Treasurer or Secretary of a club; for those who coordinate volunteers; and for organisations seeking to attract and retain volunteers.

If you are interested in becoming a volunteer; would like a volunteer's kit; or further information on volunteer training, contact Marie Hensley at the Kandanga One Stop Shop on 07 5488 4670 or 0427 017 604, or Linda Broe at the Community Futures Task Force on 1800 133 258 or email info@communityfutures.qld.gov.au.